

# Begrüßung

## Humboldt-Kantate

### MWV D 2

Felix Mendelssohn Bartholdy  
(1809-1847)

## No. 1 Chor

6

11

21

28

40

46

51

*f*

*p*

*f*

*f*

*ff*

*ff*

*ff*

*rit.* *A tempo*

5

2

2

5

2

## No. 1a Recit.

[illegible]



Corno I  
No. 3

3

7

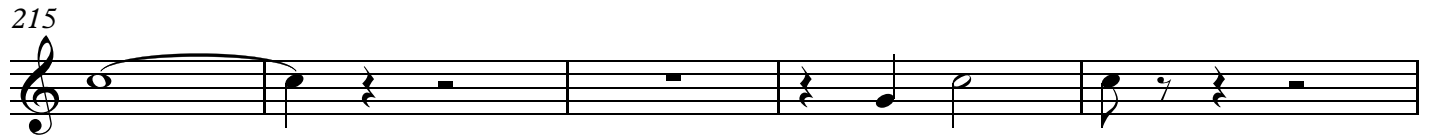
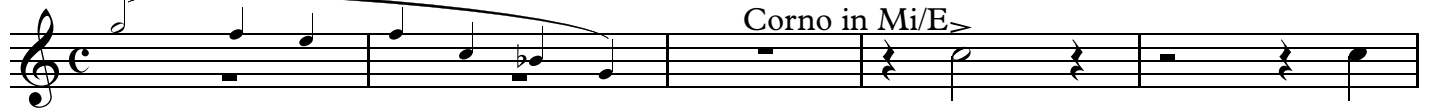


Andante

No. 4 Arioso

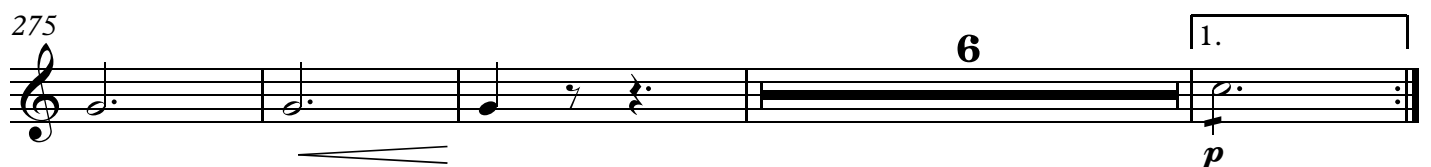
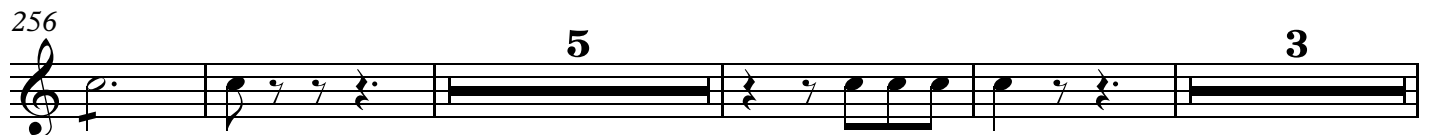
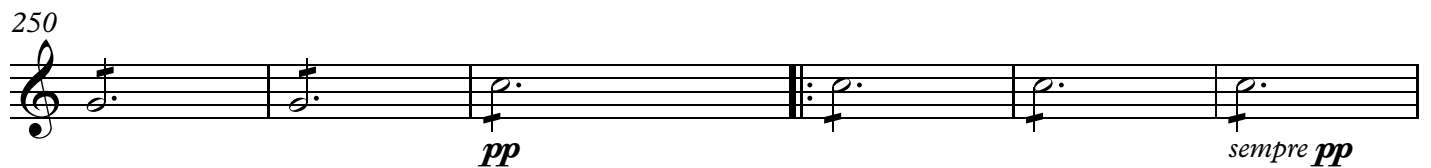
Vc. solo

Corno in Mi/E $\text{♯}$



No. 5 Tenor solo und Chor

Allegro vivace



4 Corno I

285 5 4 6 *f*

301 *p* 4

309 4 *p*

318 *cresc.* *al* *f* *p* *cresc.*

324 3 2 *rit.* *f*

331 - A tempo *pp* *sim.*

339 *p*

345 4 *p*

352 7 *ff*

366

374 *p* *dim.* *pp* To Hn. (D) Horn in I

Corno I  
No. 6 Recit.

5

Adagio

7

391

2

*p* *p* *cresc.* *cresc.* *al* *f* *f* *p*

No. 7 Chor

15

T.

421

8 Fel - sen steht. *p* *cresc.*

*mf* *cresc.* *ff* *ff*

429

2

Allegro vivace

69

T.

436

8 Grö - - - ße ist's ge - *ff*

509

*ff*

515

521

527

*f* *f*

533

2

*f*

538

*f*