

## Stabat mater in c

op. 16  
1. ChorJoseph Gabriel Rheinberger  
(1839-1901)

Lento ma non troppo

pp

5

p sf fz

10

14

f pp

18

f marcato

22

A

26

sf sfp

30

pp f

35

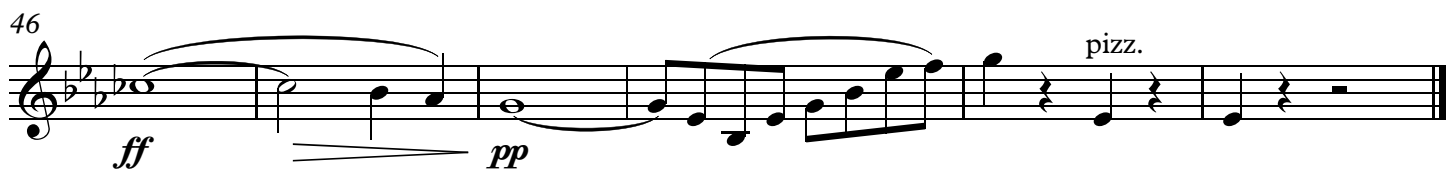
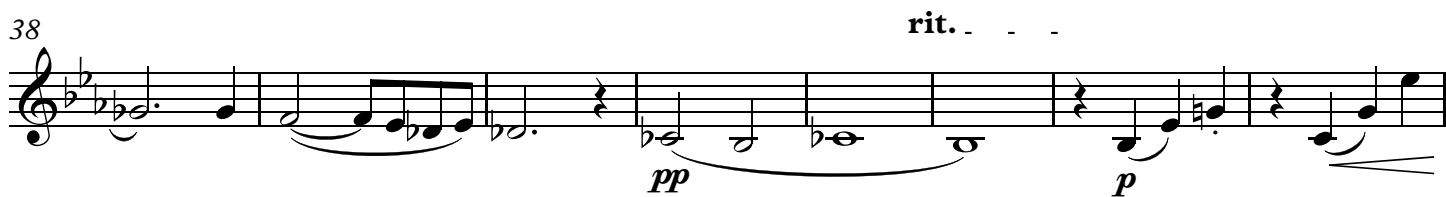
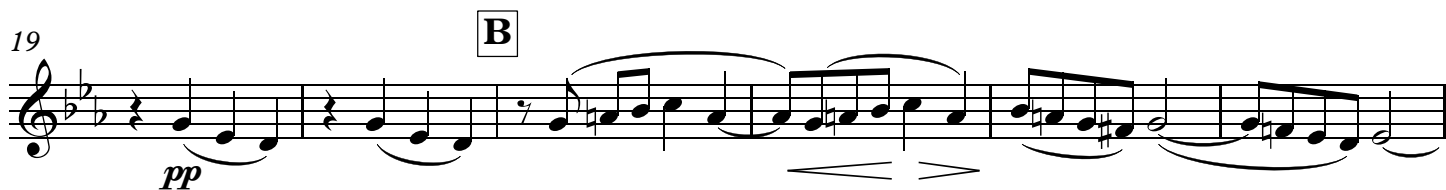
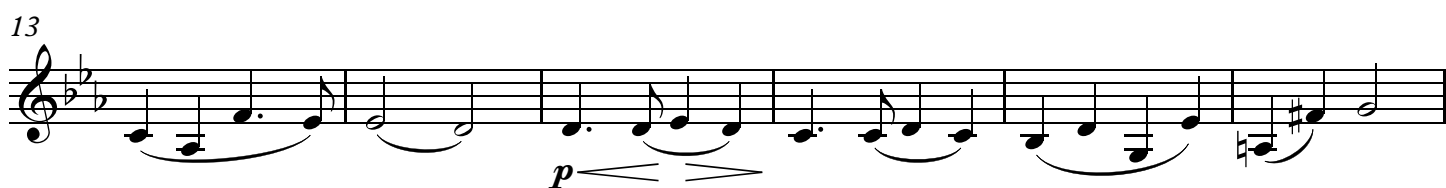
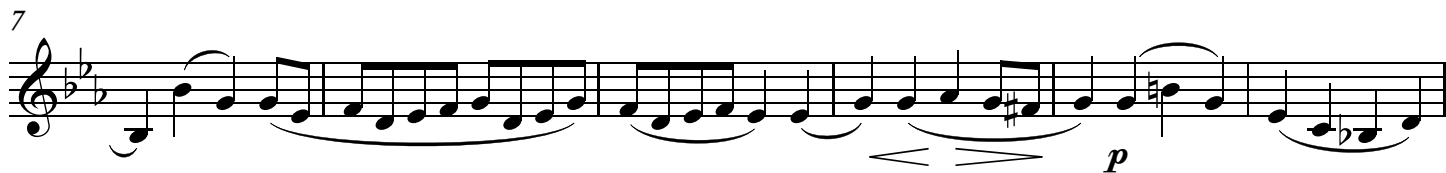
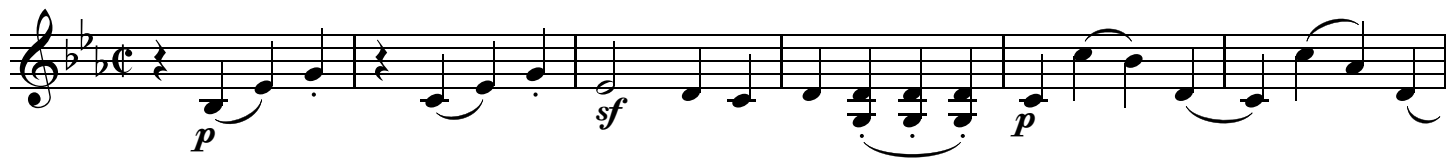
f pp f

39

pp

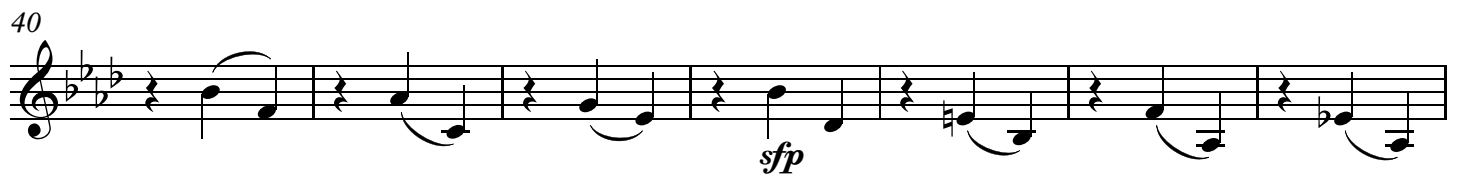
Violino II  
2. Arie

Andante molto



Violino II  
3. Ensemble

3



V.S.

78

*p* *f*

This musical score for Violino II covers measures 78 to 81. The key signature has three flats (B-flat, E-flat, A-flat), and the time signature is 4/4. Measure 78 begins with a treble clef and a key signature change from two flats to three flats. The melody starts on a half note G4, followed by a quarter rest, a half note F4, and a half note E4. Measure 79 continues with a half note D4, a half note C4, and a half note B3. Measure 80 features a half note A3, a half note G3, and a half note F3. Measure 81 concludes with a half note E3, a half note D3, and a half note C3. The piece ends with a double bar line. Dynamics include a piano (*p*) marking under the first measure and a forte (*f*) marking under the fourth measure. A slur connects the notes across measures 78 and 79, and another slur connects the notes across measures 80 and 81.

Violino II  
4. Duett

5

Andante

*p* *f*

10 **F** *pp* *fp*

23 **G** *p*

34 *mf* *fp* *fp*

45 *mf* *f*

54 **H** *f* *sf* *f*

65 *pp* *f* *p*

75 *p*

87 *f* *dim.*

98 *p* *pp* *p*

106 *f* *pp*

6 Violino II  
5. Schlusschor

Grave

Musical score for Violino II, 5. Schlusschor, Grave section. The score is written in treble clef with a common time signature (C). It consists of 38 measures. The tempo is marked 'Grave'. The key signature has one sharp (F#). The score includes various dynamics: *sf* (sforzando), *f* (forte), *ff* (fortissimo), *p* (piano), *pp* (pianissimo), and *cresc.* (crescendo). There are also articulation marks like accents (^) and slurs. A first ending bracket labeled 'I' spans measures 15 to 21. The section ends with a triple measure rest followed by a double bar line and a key signature change to two flats (Bb).

Fuga

46 **J** Allegro moderato

Musical score for Violino II, 5. Schlusschor, Fuga section. The score is written in treble clef with a common time signature (C). It consists of 12 measures. The tempo is marked 'Allegro moderato'. The key signature has two flats (Bb). The score includes various dynamics: *f* (forte) and *tr* (trill). There are also articulation marks like slurs and trills. The section ends with a double bar line.

61 **K**

*f*

66

71 *f* *p*

77 *f*

83 **L** *p*

88 *pp*

92 *pp* *cresc.* *fp*

98 **M** **Animato** *f*

105 *sf*

110 *sf* *sf*

115 **poco stringendo** *cresc.*

