

# Quae est ista

a 4 voci

Symbolae diversorum musicorum, Lorenzo Calvi

**Basso continuo** Horatio Nantermi (~1550 – after 1607)



6



10



14



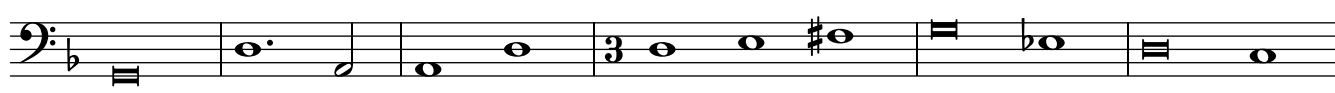
19



23



28



Copyright © 2016 by the Choral Public Domain Library (<http://www.cpdl.org>)

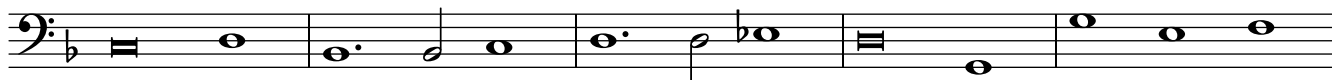
Edition may be freely distributed, duplicated, performed, or recorded.

Source: Universitätsbibliothek J. C. Senckenberg, Frankfurt a. Main, Mus W24 Nr. 1

34



39



44



50



55



59



63



66

