

Domine in virtute tua (2nd setting)

Edited by Jason Smart

Robert Johnson (*fl.*16th cent.)

Mean

Countertenor

Tenor 1

Tenor 2

Bass

Do - mi-ne, in

Do - mi-ne, in vir - tu - te tu - a

Do - mi - ne, in vir -

4

— vir - tu - te tu - a lae - ta - bi-tur rex,

lae - ta - bi-tur rex, Do - mi-ne, in vir - tu - te

- tu - te tu - a lae - ta - bi-tur rex, Do - mi -

Do - mi-ne, in vir - tu - te tu - a lae -

Do - mi - ne, in vir - tu - te tu - a lae - ta -

Do - mi-ne, in vir - tu - te tu - a lae - ta - bi-tur rex:
 tu - a lae - ta - bi-tur rex: et
 - ne, in vir - tu - te tu - a lae - ta - bi-tur rex:
 - ta - bi - tur rex, Do - mi - ne, in vir - tu - te
 - bi-tur rex, Do - mi - ne, in vir - tu - te tu -

et su - per sa - lu - ta - re tu - um,
 su - per sa - lu - ta - re tu - um,
 et su - per sa - lu - ta - re tu - um,
 tu - a lae - ta - bi-tur rex: et su - per sa - lu -
 - a lae - ta - bi-tur rex: et su - per sa - lu - ta - re

et su - per sa - lu - ta - re tu - um
 et su - per sa - lu - ta - re tu - um e -
 et su - per sa - lu - ta - re tu - um, et su - per
 - ta - re tu - - - um, et su - per sa - lu - ta - re
 tu - - - um, et su - per sa - lu - ta - re tu -

24

e - xul - ta - bit ve - he - men - ter, e - xul - ta - bit
 - xul - ta - bit ve - he - men - ter, e - xul - ta - bit
 sa - lu - ta - re tu - um e - xul - ta - bit ve - he - men - ter,
 tu - um e - xul - ta - bit ve - he - men - ter, e - xul -
 - um e - xul - ta - bit ve - he - men - ter,

29

- bit ve - he - men - ter.
 ve - he - men - ter, ve - he - men - ter. De - si - de - ri - um cor - dis
 e - xul - ta - bit ve - he - men - ter.
 - ta - bit ve - he - men - ter.
 ve - he - men - ter, ve - he - men - ter. De - si - de - ri - um

34

De - si - de - ri - um cor - dis e - jus, de - si -
 e - jus, de - si - de - ri - um cor - dis e -
 De - si - de - ri - um cor - dis e - jus,
 De - si - de - ri - um cor - dis e - jus,
 cor - dis e - jus, de - si - de - ri - um cor -

38

de-ri-um cor-dis e-jus tri-bu-i-sti e-i,
 - - jus tri-bu-i-sti e-i,
 de-si-de-ri-um cor-dis e - - - - - jus
 de-si-de-ri-um cor-dis e - - - jus tri-bu-i -
 - dis e - - jus tri-bu-i - sti

42

tri-bu-i-sti e - - - - i, et
 tri-bu-i-sti e - - - -
 tri-bu-i-sti e - - - - i,
 - sti e - i, tri-bu-i-sti e - - - i,
 e - - - i, tri-bu-i-sti e - i, et vo-lun-ta-te

46

vo-lun-ta-te la-bi-o-rum e-jus, et
 - i, et vo-lun -
 et vo-lun-ta-te la-bi-o-rum e-jus,
 et vo-lun-ta-te la-bi-o-rum,
 la-bi-o-rum, et vo-lun-ta-te la-bi-

51

vo - lun - ta - te la - bi - o - rum e - jus non frau -
 - ta - te la - bi - o - rum e - jus non frau - da -
 et vo - lun - ta - te la - bi - o - rum e - jus non frau - da - sti e - um,
 la - bi - o - rum e - jus
 - o - rum, e - jus non frau - da - sti e -

56

- da - sti e - um, non frau - da - sti e - um.
 - sti e - um, non frau - da - sti e - um.
 non frau - da - sti e - um. Quo - ni -
 non frau - da - sti e - um, non frau - da - sti
 - um, non frau - da - sti e - um.

60

Quo - ni - am prae - ve - ni - sti e - um,
 Quo - ni - am prae - ve - ni - sti e - um, quo - ni -
 - am prae - ve - ni - sti e - um, quo - ni - am prae - ve - ni - sti e -
 e - um. Quo - ni - am prae - ve -
 Quo - ni - am prae - ve - ni - sti e - um, quo - ni - am prae - ve - ni - sti

64

quo-ni-am prae-ve-ni-sti e-um,
 - am prae-ve-ni-sti e-um, quo-ni-am prae-ve-ni-sti e-um,
 - um in be-
 - ni-sti e-um in be-ne-di-cti-
 e-um, prae-ve-ni-sti e-um in be-ne-

68

in be-ne-di-cti-o-ni-bus dul-ce-di-nis, dul-
 in be-ne-di-cti-o-ni-bus dul-ce-di-
 - ne-di-cti-o-ni-bus dul-ce-di-nis, dul-ce-di-nis:
 - o-ni-bus dul-ce-di-nis:
 - di-cti-o-ni-bus dul-ce-di-nis, dul-ce-di-nis:

72

- ce-di-nis: po-su-i-sti in ca-pi-te e-jus,
 - nis: po-su-i-sti in ca-pi-te e-jus,
 po-su-i-
 po-su-i-sti in ca-pi-te e-jus, po-su-
 po-su-i-sti in ca-pi-te e-jus, po-su-i-sti

77

po - su - i - sti in ca - pi - te e - jus
 in ca - pi - te e - jus
 - sti in ca - pi - te e - jus co -
 - i - sti in ca - pi - te e - jus co - ro - nam de
 in ca - pi - te e - jus co - ro -

81

co - ro - nam de la - pi - de pre - ci - o - so,
 co - ro - nam de la - pi - de pre - ci -
 - ro - nam de la - pi - de pre - ci - o - so,
 la - pi - de pre - ci - o - so, co - ro -
 - nam de la - pi - de pre - ci - o - so, co -

85

co - ro - nam de la - pi - de pre - ci -
 - o - so, co - ro - nam de la - pi -
 co - ro - nam de la - pi - de pre - ci - o - so,
 - nam de la - pi - de pre - ci - o - so,
 - ro - nam de la - pi - de pre - ci - o - so.

89

- o - - - - - so. Vi - tam pe - ti -
- de pre-ci-o - - - - - so. Vi -
Vi - tam pe - ti - it a te,
Vi - tam pe - ti - it a te,
Vi - tam pe - ti - it a

94

- it a te et
- tam pe - ti - it a te et tri - bu - i - sti e -
vi - tam pe - ti - it a te
vi - tam pe - ti - it a te et tri - bu -
te, vi - tam pe - ti - it a te, vi - tam

99

tri - bu - i - sti e - i, et tri - bu - i - sti e - i, et tri - bu -
- i, et tri - bu - i - sti e - i, et
et tri - bu - i - sti e - i,
- i - sti e - i, et tri - bu - i - sti e -
pe - ti - it a te et tri - bu - i - sti e -

104

- i - sti e - - - i

tri - bu - i - sti e - i lon - gi - tu - di -

et tri - bu - i - sti e - i lon - gi - tu - di - nem di -

- i, e - - - i lon - gi - tu - di - nem di - e - rum

- i, e - - - i lon - gi - tu - di - nem di - e - rum

109

lon - gi - tu - di - nem di - e - rum in sae - cu - lum et in

- nem di - e - rum in sae - cu - lum et in sae - cu - lum

- e - rum in sae - cu - lum et in sae - cu - lum sae - cu -

in sae - cu - lum et in sae - cu - lum sae - cu - li,

113

sae - cu - lum sae - cu - li, sae - cu - li.

sae - cu - li, sae - cu - li.

- li, in sae - cu - lum et in sae - cu - lum sae - cu - li.

sae - cu - lum et in sae - cu - lum sae - cu - li.

et in sae - cu - lum sae - cu - li.

117

Ma - gna glo - ri - a e - jus in sa - lu - ta - ri tu - o,
 Ma - gna glo - ri - a e - jus in sa - lu - ta - ri tu - o,
 Ma - gna glo - ri - a e - jus in

122

Ma - gna glo - ri - a e - jus in sa - lu - ta - ri tu - o,
 - o, tu - - - o, ma - gna glo - ri - a e -
 ma - gna glo - ri - a e - jus in sa - lu - ta - ri
 - a e - jus in sa - lu - ta - ri tu - o,
 sa - lu - ta - ri tu - - - o,

127

ma - gna glo - ri - a e - jus in sa - lu -
 - jus in sa - lu - ta - ri tu - - - o, tu - - -
 tu - o:
 ma - gna glo - ri - a e - jus in sa - lu - ta - ri tu - -
 ma - gna glo - ri - a e - jus in sa - lu - ta - ri tu - - - o:

132

- ta - ri tu - o: glo - ri - am et ma -

- - - o: glo - ri - am et ma - gnum de -

glo - ri - am et ma - gnum de - co - rem,

- - o: glo - ri - am et ma - gnum de - co - rem, _____

glo - ri - am et ma - gnum de - co - rem, de - co - rem, glo - ri -

136

- gnum de - co - rem, glo - ri - am et ma - gnum de -

- co - rem, glo - ri - am et ma - gnum de - co -

glo - ri - am et ma - gnum de - co - rem im -

glo - ri - am et ma - gnum de - co - rem

- am et ma - gnum de - co - rem, de - co - rem im - po - nes

140

- co - rem im - po - nes su - per e - um, im - po - nes su - per

- rem im - po - nes su - per e - um,

- po - nes su - per e - um, im - po - nes su - per e -

im - po - nes su - per e - um, _____

su - per e - um, im - po - nes su - per e - um,

145

e - um, im - po - nes su - per e - - - um, im - po - nes su - per
 im - po - nes su - per e - - - - um, im - po - nes su - per e - -
 - um, im - po - nes su - per e - - - um, im - po - nes su - per
 — im - po - nes su - per e - um, im - po - nes su - per
 im - po - nes su - per e - - - um, im - po - nes su - per

150

e - - - um.
 - - - um.
 e - - - um. Quo-ni-am da - bis e - um in be - ne - di - cti - o - ni - -
 e - - - um. Quo-ni - am da - bis e - um in be - ne - di - cti - o - ni - - Quo-ni -
 e - - - um. Quo-ni - am da - bis e - um in be - ne - di - cti - o - ni - -

155

Quo-ni-am da - bis e - um in be - ne - di - cti - o - ni - bus, quo-ni-am da -
 Quo-ni - am da - bis e - um in be - ne - di - cti - o - ni - bus, quo-ni-am da -
 - bus, quo-ni-am da -
 - am da - bis e - um in be - ne - di - cti - o - ni - - bus, quo-ni-am da -
 - bus, quo-ni-am da -

160

- bis e - um in be - ne - di - cti - o - ni - bus in sae-cu-lum
 - bis e - um in be - ne - di - cti - o - ni - bus in sae-cu-
 - bis e - um in be - ne - di - cti - o - ni - bus in sae-cu-lum sae-cu-li,
 - bis e - um in be - ne - di - cti - o - ni - bus
 - bis e - um in be - ne - di - cti - o - ni - bus in sae-cu - lum sae-cu-li,

165

sae-cu- li, in sae-cu-lum sae - cu - li:
 - lum sae-cu - li, in sae-cu-lum sae - cu - li:
 in sae-cu-lum sae-cu - li:
 in sae-cu-lum sae-cu - li: lae - ti - fi - ca - bis
 in sae-cu-lum sae-cu - li: lae - ti - fi -

169

lae - ti - fi - ca - bis e -
 lae - ti - fi - ca - bis e - um in gau - di - o,
 lae - ti - fi - ca - bis e - um in gau - di - o,
 e - um in gau - di - o, lae - ti - fi -
 - ca - bis e - um in gau - di - o, in gau - di - o, lae -

174

- um in gau - di - o _____ cum vul - tu
 lae - ti - fi - ca - bis e - um in gau - di - o
 lae - ti - fi - ca - bis e - um in gau - di - o
 - ca - bis e - um in gau - di - o
 - ti - fi - ca - bis e - um in gau - di - o, in gau - di - o _____ cum

179

tu - o, _____ cum vul - tu tu -
 cum vul - tu tu - o, cum vul - tu tu -
 cum vul - tu tu - o, cum vul - tu tu -
 cum vul - tu tu - o, cum vul - tu tu - o,
 vul - tu tu - - - o, cum vul - tu tu - o, cum vul - tu tu -

184

- o, cum vul - tu tu - o, cum vul - tu tu - o.
 - o, cum vul - tu tu - o.
 - o, cum vul - tu tu - o. Quo-ni-am rex spe - rat in Do - mi-no,
 cum vul - tu tu - o. Quo-ni - am rex spe - rat in Do - mi -
 - o, cum vul - tu tu - o. Quo-ni - am rex spe -

189

Quo-ni-am rex spe - rat in Do - mi-no, quo-ni -

Quo-ni - am rex spe - rat in Do - mi - no,

quo-ni - am rex spe - rat in Do - mi - no,

- no, quo-ni-am rex spe - rat in Do - mi-no,

- rat in Do - mi - no, quo-ni-am rex spe - rat in

194

- am rex spe - rat in Do - mi - no, et

quo-ni-am rex spe - rat in Do - mi - no,

et in mi - se - ri - cor - di -

et in mi - se - ri - cor - di - a Al - tis - si -

Do - mi - no, et in mi - se - ri - cor - di - a Al -

199

in mi - se - ri - cor - di - a Al - tis - si-mi, Al - tis - si -

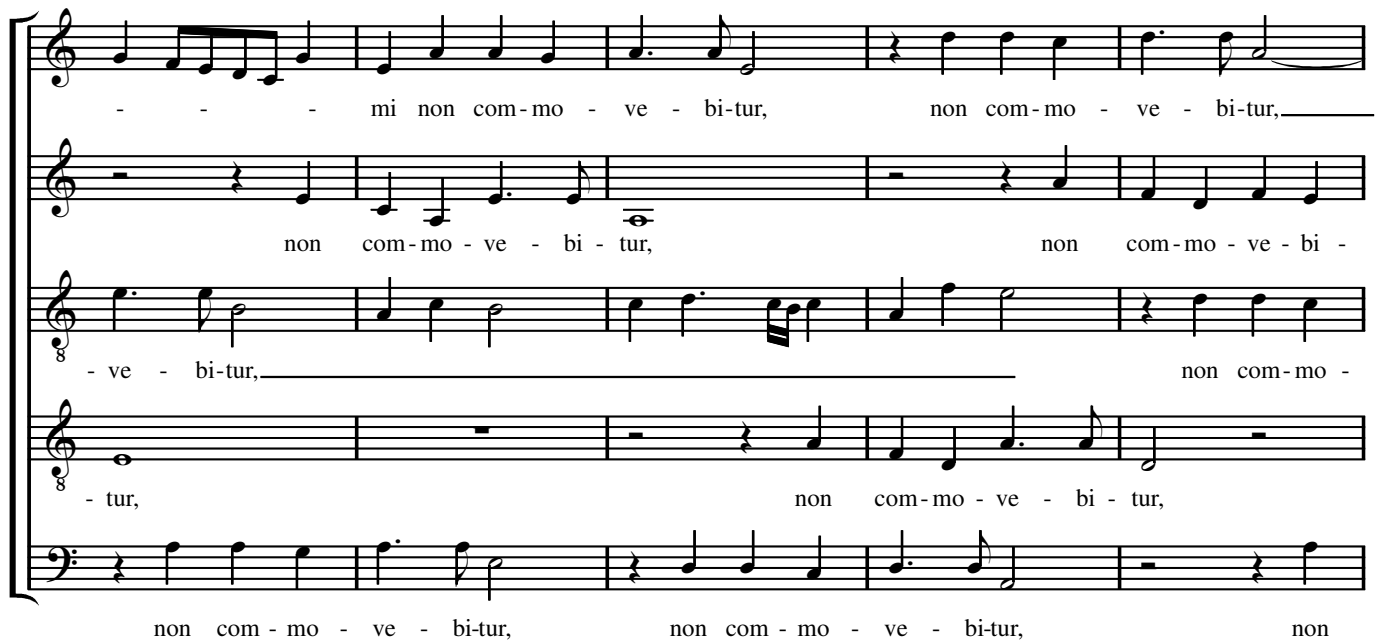
et in mi - se - ri - cor - di - a Al - tis - si mi

- a Al - tis - si - mi, Al - tis - si - mi non com - mo -

- mi non com - mo - ve - bi -

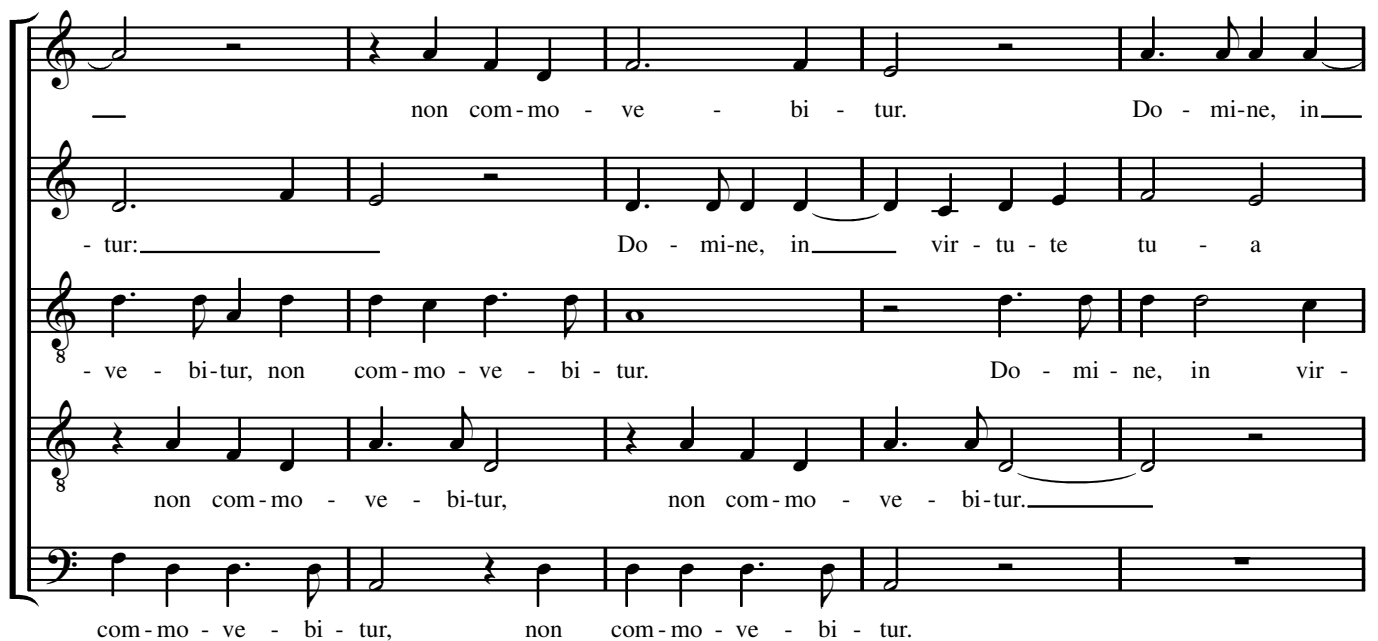
- tis - si - mi non com - mo - ve - bi-tur,

204




- - - mi non com - mo - ve - bi - tur, non com - mo - ve - bi - tur, _____
 non com - mo - ve - bi - tur, non com - mo - ve - bi -
 - ve - bi - tur, _____ non com - mo -
 - tur, non com - mo - ve - bi - tur,
 non com - mo - ve - bi - tur, non com - mo - ve - bi - tur, non

209



— non com - mo - ve - bi - tur. Do - mi - ne, in —
 - tur: _____ Do - mi - ne, in — vir - tu - te tu - a
 - ve - bi - tur, non com - mo - ve - bi - tur. Do - mi - ne, in vir -
 non com - mo - ve - bi - tur, non com - mo - ve - bi - tur. _____
 com - mo - ve - bi - tur, non com - mo - ve - bi - tur.

214



— vir - tu - te tu - a lae - ta - bi - tur rex,
 lae - ta - bi - tur rex, Do - mi - ne, in — vir - tu - te
 - tu - te tu - a lae - ta - bi - tur rex, Do - mi -
 Do - mi - ne, in — vir - tu - te tu - a lae -
 Do - mi - ne, in vir - tu - te tu - a lae - ta -

219

Do - mi-ne, in vir - tu - te tu - a lae - ta - bi-tur rex:
 tu - a lae - ta - bi-tur rex: et
 - ne, in vir - tu - te tu - a lae - ta - bi-tur rex:
 - ta - bi - tur rex, Do - mi - ne, in vir - tu - te
 - bi-tur rex, Do - mi - ne, in vir - tu - te tu -

224

et su - per sa - lu - ta - re tu - um,
 su - per sa - lu - ta - re tu - um,
 et su - per sa - lu - ta - re tu - um,
 tu - a lae - ta - bi-tur rex: et su - per sa - lu -
 - a lae - ta - bi-tur rex: et su - per sa - lu - ta - re

229

et su - per sa - lu - ta - re tu - um
 et su - per sa - lu - ta - re tu - um e -
 et su - per sa - lu - ta - re tu - um, et su - per
 - ta - re tu - - - um, et su - per sa - lu - ta - re
 tu - - - um, et su - per sa - lu - ta - re tu -

234

e - xul - ta - bit ve - he - men - ter, e - xul - ta - bit
 - xul - ta - bit ve - he - men - ter, e - xul - ta - bit
 sa - lu - ta - re tu - um e - xul - ta - bit ve - he - men - ter,
 tu - um e - xul - ta - bit ve - he - men - ter, e - xul -
 - um e - xul - ta - bit ve - he - men - ter,

239

- bit ve - he - men - ter, ve - he - men - ter,
 ve - he - men - ter, e - xul - ta - bit ve - he - men - ter, e - xul -
 e - xul - ta - bit ve - he - men - ter, e - xul - ta - bit ve - he - men - ter,
 - ta - bit ve - he - men - ter, ve - he - men - ter,
 ve - he - men - ter, ve - he - men - ter, e - xul - ta - bit ve - he -

244

ve - he - men - ter.
 - ta - bit ve - he - men - ter, ve - he - men - ter.
 e - xul - ta - bit ve - he - men - ter, ve - he - men - ter.
 e - xul - ta - bit ve - he - men - ter, ve - he - men - ter.
 - men - ter, e - xul - ta - bit ve - he - men - ter.

Translation

The King shall rejoice in thy strength, O Lord : exceeding glad shall he be of thy salvation.
 Thou hast given him his heart's desire : and hast not denied him the request of his lips.
 For thou shalt prevent him with the blessings of goodness : and shalt set a crown of pure gold upon his head.
 He asked life of thee, and thou gavest him a long life : even for ever and ever.
 His honour is great in thy salvation : glory and great worship shalt thou lay upon him.
 For thou shalt give him everlasting felicity : and make him glad with the joy of thy countenance.
 And why? because the King putteth his trust in the Lord : and in the mercy of the most Highest he shall not miscarry.
 (*Psalm 21, vv.1–7, Book of Common Prayer*)

Editorial Conventions

The nomenclature of the voice-parts follows the Tudor convention.
 The original clef, mensuration symbol and first note of each part are shown on the prefatory staves.
 Editorial accidentals are placed above the notes concerned and remain operative throughout the bar.
 Ligatures are denoted by the sign $\overline{\quad}$.
 Repeat signs in the underlay have been tacitly expanded, but are recorded in the notes below

Sources

A London, British Library, Add. MSS 30480–4 ('The Hamond Partbooks', c.1560–1590; all except B textless).

30480	(M)	f.76 ^v	at beginning:	v <i>partes</i>
			at end:	m ^f Johnson
30481	(T1)	f.81 ^v	at beginning:	v <i>partes</i>
30482	(T2)	f.75 ^v	at beginning:	v <i>partes</i>
30483	(B)	f.78 ^v	at beginning:	v <i>partes</i>
30484	(Ct)	f.13	at beginning:	v <i>partes</i>
			at end:	m ^f Johnson

B Edinburgh, University Library MSS La III 483 (a, b & c), London, British Library Add MS 33933 and Dublin, Trinity College Library MS 412 (*olim* F.5.13) ('The Wode Partbooks', c.1562–1592 with later additions).

412	(M)	f.11	header on first page:	Set in In gland be ane baneist scottis preist,
			at end on stave:	quod ane Inglishe man & as I haue heard, he wes blind quhen he set it,
			at end in right hand margin:	this wes set in ingland be ane scottis preist, baneist
483(a)	(Ct)	p.163	at foot of first page:	This <i>domine</i> in virtute: wes set in <i>ingland</i> & y ^t <i>rycht</i> fynely, lang before reformation,
			header across pp.166–167:	[T]he secund mesure of this <i>domine</i> in virtute set ingland
			in right-hand margin of p.167:	Set in In gland laing before reformation,
			at end in left-hand margin:	Set in ingland in deid: Bot be ane scottis preist quha wes diletit for ane heretyke and fled in ingland
			at end in bottom margin:	Thomas hutcheon that is with the kyng knew him <i>in</i> ingland, & sa the first and report wes wrang:
33933	(T1)	p.66	at end in left-hand margin:	This <i>sang</i> wes set <i>in</i> ingland be ane scottis preist, being diletit to haue beine ane heretyke fled thair lang before reformation; thomas hutsons <i>fayther</i> now wyth y ^e King kend him,
483(b)	(T2)	p.152	at end on stave:	Thomas Wod vicar of Sanct androus wyth my hand.
			at end in left-hand margin:	Set in ingland in tyme of papistry: ix or x yeiris before reformation:
483(c)	(B)	p.153	at end:	finis <i>quod</i> Ane blind Inglishe man, [added later:] no ^t trew this wes ane scottis preist borne in dunce his name Robart Jhonson, fled for accusation of heresy thomas hutsons father knew him weill

Wode's supplementary set of partbooks – Edinburgh University Library MSS Dk.5.14 and Dk.5.15 and Washington, Georgetown University, Special Collections Joseph Mark Lauinger Library MS 10 – do not contain Johnson's motet.

C Oxford, Bodleian Library, Tenbury MS 1464 (c.1575; B only).

(B)	f.5	at end:	m ^f Johnson
-----	-----	---------	------------------------

D Oxford, Bodleian Library MSS Mus. e. 1–5 ('The Sadler Partbooks', c.1565–1585).

1	(M)	f.44	at end:	master Johnson p ^r este
2	(Ct)	f.43 ^v	at end:	m ^r Johnson
3	(T1)	f.44	at end:	m ^r Johnson
4	(T2)	f.41	at end:	m ^r Robert Johnson
5	(B)	f.39 ^v	at end:	m ^r Robert Johnson

E Oxford, Bodleian Library, MSS Tenbury 341–4 (c.1610; lacking B).

341	(M)	f.25	at end:	m ^r Johnson
342	(Ct)	f.25	at end:	m ^r Johnsson
343	(T1)	f.25	at end:	m ^r Johnson
344	(T2)	f.25	at end:	m ^r Johnson

F Chelmsford, Essex Record Office, Petre MS D/DP.Z.6/1 (c.1590; B only).

(B)	f.54 ^v	at end:	m ^r Johnson
-----	-------------------	---------	------------------------

Notes on the Readings of the Sources

This motet is one of two settings of this text by Johnson that use the same or similar points of imitation. The settings are mostly independent, but some of the music is identical, particularly in their second parts. It is not clear which setting was written first. The sources of the second setting preserve two distinct strands of transmission. Where there is shared music with the first setting, source **A** shows the closest similarities to and less scribal interference than other sources. It has therefore been used as the primary copy text for this edition. However it lacks underlay except in the Bass part. The readings of Thomas Wode's partbooks, source **B**, are in broad agreement with **A**, except in its Bass part which has undergone extensive amendment of rhythms to produce improved accentuation of the text. The result, although musically more satisfactory, is at variance with the other sources and cannot be authentic. The upper four voices of **B** have been used to provide the underlay for this edition. Source **C** agrees very closely with **A**, showing very few variants. The remaining sources, **D**, **E** and **F**, preserve a version of the motet with several mostly inferior variants not found in the other three sources. Their readings are very close and it is not impossible that **E**, which belonged to the Norfolk household of Edward Paston was copied directly from, or from the same archetype as, **D**, a set of partbooks that belonged to the Northamptonshire schoolmaster and priest John Sadler. **F** is in the same hand as **E**, but is not an identical copy and probably used a different archetype. The underlay in sources **B** and **D** is mostly unambiguous, but this is not so in the other sources. Since so much of Johnson's underlay is syllabic this is not a major problem, but there is considerable doubt about the placing of final syllables and there is much more ambiguity in the sources than recorded in the notes below. Generally the impression is that the scribes expected final syllables to be sung on the final notes of phrases, but there are a few instances where the evidence of the sources, and also of Johnson's first setting of this text, implies that a melisma should be sung on a final syllable. The word *precioso* in bars 81ff. is a case in point.

In each section below each reference to a bar or group of bars is separated by an oblique stroke. Within these references multiple readings in the same voice are separated by a comma and readings in different voices by a semicolon. The order within each entry is: (1) bar number(s); (2) voice; (3) source(s), except where the readings separated by source; (4) reading of the source(s), with any subsequent bar numbers in brackets. Pitches are in capital letters, preceded by a number if necessary, e.g. ¹C = first note C in the bar. Underlay repeat signs normally stand for the complete preceding phrase of text; exceptions are clarified (in which cases counts of notes include tied notes).

Abbreviations

amb	ambiguously positioned	Ct	Countertenor	om	omitted	T1, T2	Tenor 1, Tenor 2
B	Bass	dot-	dotted	q	quaver	und	underlay
conj	syllables conjoined	lig	ligature	sl	slur	∴	underlay repeat sign
corr	corrected	M	Mean	sb	semibreve	+	tie
cr	crotchet	m	minim	sq	semiquaver		

Accidentals and Staff Signatures

1 B **B** staff signature *b* for lower B / 28 B **BF** *h* for B / 32 T1 **B** no # / 55 B **B** *b* for B / 57 B **B** new line in source with staff signature *bs* for upper and lower B begins with C / 61 B **B** new line in source with staff signature *b* for lower B only begins with A / 67 M **BDE** no # / 74 B **D** *h* for B / 116 M **BE** no # / 151 T1 **DE** # for C / 154 B **B** *h* for B / 163 M **BDE** no # / 184 M **A** # / 186 M **A** # for ¹C / 187 M **A** # for A (presumably intended for G) / 200 M **A** # for ²G /

Other Readings

A 9 T2 *dot-crA qA mA* for *mA crA crA* / 11 B ∴ below ¹D / 17–18 T1 no lig / 21 B ∴ below A / 21–22 Ct no lig / 22 T1 no lig / 24 Ct G is corr *cr* / 26–28 B *vehementer conj* below FFEDCB / 28 T2 AGG are *crA qA qA mG* / 29 B ∴ below A / 30 B ∴ below A / 36 T1 *mA* is *crA crA*; B ∴ below A / 39–40 M no tie / 43 B ∴ below ²E / 48 T1 C is *crC qC* / 49 B ∴ below C / 51 B D is corr *cr* / 53–54 T2 no tie / 57–58 B ∴ for *non fraudasti eum* displaced below ¹G / 61 T1 *crA* for ¹A²A / 62 B

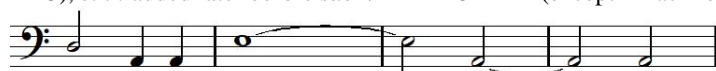
∴ (for 9 notes) below ²A / 64 M *crG* for *qG qG* / 64–66 B *praevenisti eum* underlaid / 70 B ∴ below ²D / 71 M ²C om, B is *q* / 72 B ∴ below F, (73) *laeti-* below ¹C²C though must be intended one note later, no ∴ / 75 B ∴ below D / 77 T2 C is corr *cr*; B E is corr *q* / 82–83 B *precioso* conj below ²E³EAGFE / 84 B ∴ below C / 95 B ∴ below A / 98 B ∴ below ¹A (displaced, intended for ²A) / 104–105 B *ei* underlaid / 110 Ct no lig, E is F / 114 Ct new staff with clef C1 corr to C2 begins with A (next two staves similar) / 124 Ct *sbE* is *mE mE* / 127 B ∴ below ¹E / 131 T2 A is *crA crA*; B -*o* underlaid / 134 T2 CA for AF (reading of version 1 adopted) / 135 B ∴ for ²A (displaced below ³A) / 137 T2 CA for AF (reading of version 1 adopted) / 141 B ∴ below D / 144 T2 A is *crA crA* / 145 B ∴ below D / 148 B ∴ below D / 157 T2 AE for F³C / 159 B ∴ below ¹A / 161 T2 G is *dot-crG qG*, no tie, (162) *mG mA* for GGAA / 166 B ∴ below C / 170 Ct extra *crA* erased after ²A / 172 B ∴ below F / 172–173 Ct no lig / 174–177 B und -*ficabis eum in gaudio, in gaudio* om / 180 B ∴ below G / 181 Ct new staff with uncorrected clef C1 in error begins with A, error persists to end but notation is for clef C2 / 182–184 B *cum vultu tuo* underlaid / 183 Ct no lig, A is B / 184 B ∴ below D / 192 B ∴ below ¹C / 198–200 B *Altissimi* conj below EAADEFE / 200 T1 *mB* for *dot-crB qB* / 203 M G is *q*, (204) ¹G is *dot-cr* / 204 B ∴ below ¹A / 206 B ∴ below ¹D / 207–208 T1 no lig; B ∴ below A / 210 B ∴ below D / 220 Ct ¹D om / 221 B ∴ below ¹D / 223–224 B no tie / 231 M CD are *dot-cr q* / 231–232 Ct no lig / 231 B ∴ below A / 232 T1 no lig / 236–238 B *vehementer* conj below FFEDCB / 238 T2 AGG are *crA qA qA mG* / 239 B ∴ below A / 240 B ∴ om below A / 242 T2 *crD* for *qD qD* / 244–248 M *sbA+sbA sbA+sbA+sbA* / 245–247 B *vehementer* conj below DEFDCD /

- B** 4 T1 *tua* conj below F²E, but hairline from -*a* to ¹E in 5 / 10 T1 *tua* conj below ²E²D / 14 T2 *tua* conj below F²E / 21 M CD are *dot-cr q* (but not in 231) / 23 T1 ∴ below ¹E / 26 B *mF* for *crF crF*, (27) -*hemen-* below ED, (28) -*ter* below B / 28 T2 GG are *dot-cr q* / 29 B ∴ below A / 30 B ∴ below A / 31 Ct G is E above middle C / 35 M *mA* for *crA crA*, -*dis e-* one note later; T1 *cordis* conj below ²E²DC, (36) *ejus* conj below ²B²A / 36 B ∴ om below A / 38 M *mA* for *crA crA*, -*dis e-* one note later / 38–39 T1 *cordis* conj below DEDC, (39) *e-* below A / 42 B *ei* conj below EF / 44 M -*i* om; Ct G²F are corr *q* corr *q*; T2 ²C is A / 48 T1 *e-* below ²B / 49 M *m-rest* om; T2 ³A is G / 66 M *eum* conj below GBA; Ct *prevenisti* conj below DDED, (67) *eum* conj below ¹A²B²A / 69 T1 ¹C is E (8ves with M) / 71 Ct ²E is F / 75–76 B *ejus* conj below DEFD / 79 M *e-* deleted below ³D, (80) *e-* below C / 82 T2 -*so* below A / 83 T1 -*so* below D; B -*so* below D / 84 B ∴ below C (and below ³E in 86) / 85 M -*so* below A (not in 84); Ct -*so* below D / 87 T2 -*so* below A / 88 T1 -*so* below D / 89 M CBA are *dot-cr sq sq* / 96 B ∴ (for *vitam petiit a te*) below ²E but clearly intended for A in 95 / 98 B *mA* for *crA crA*, *a* below E, (99) FFEE are *mF mE*, no und / 102 T2 *ei* below A, (104) *ei* repeated below A / 104–106 T2 *tribuisti ei* below EGAGEE / 110 M B is D / 111 B EE are *qE qE crE* with und *saeculum*, (112) DDD are *dot-crD qD* with und *saecu-* / 113 Ct ¹E om, *saeculi* conj below ²EDC, *crE* after A; B ∴ (for *et in saeculum*) om below ¹E / 114 T2 ²B is A corr to B / 114–115 Ct AC are *qA qA qC qC*, *et in saeculum* below AACCD, (115) *sae-* below ¹E / 117 M ‘the :2: measure,’ in right-hand margin of page; Ct T1 B mensuration symbol Φ at start of bar; T2 ‘The secund measure’ on staff before start of bar / 122 Ct -*o tu-* om / 123 B *tuo* conj below EFE (-*o* also in 124 at start of new line) / 127 M -*o* below E (not in 126) / 128 B ∴ (for *gloria ejus in salutare tuo*) below E but clearly intended for ¹F in 127 / 131 Ct -*o* below E (not in 133) / 133 B *mE* for *crE crE*, (134) *mC* for *crC crC*, (134–135) *decorem* conj below DCD¹A / 134 T2 CA for AF (reading of version 1 adopted) / 137 T2 CA for AF (reading of version 1 adopted); B *mE* for *crE crE*, (138) *mC* for *crC crC*, (137–139) *decorem* conj below DCDA / 144 T2 A is *crA crA*, *super e-* below ²AEG, (145) -*um* below ¹D / 145 T1 ∴ below D; B ∴ om below D / 147 M *eum* conj below ¹GA / 148 M *mA* for *crA* ¹*cr-rest*; T1 ∴ (for 6 notes) below D; B ∴ below D / 150 M -*um* below ³G; T1 *e-* below E / 157 M F²E are *dot-cr q* / 158 T2 -*bus* below E, (159) ¹A om, corr by extra *crA* after ⁴A with consequent reallocation of underlay one note earlier than edition (161) no tie, (162) GGAA are *mG mA* with und -*oni-* / 159 Ct ∴ below ¹E (and below F in 161) / 160–161 B A+A, (161–162) no tie, *benedi-* below DCC / 167 Ct ∴ below E, *mD* for *crD crD* / 172–173 B ∴ below FAG, -*o* below ¹C / 176 B ∴ (for 7 notes) below G / 178 M *cr-rest* om / 180 M -*o* below E; B -*o* below D, ∴ below E / 182 B ∴ below ²D, no tie / 184 T2 -*o* below A (and in 182); B ∴ below D / 186 M B is *m* / 188 M *sb-rest* is *m-rest* / 189 T2 *Domi-* below CF, (190) -*no* below ²G / 193 T2 *Do-* below C, (194) -*mi-* below ¹F, (195) -*no* below G / 199 T1 -*si-* below C at end of line, (200) -*si-* repeated below ¹B at start of new line, *mB* for *dot-crB qB*, (201) A is *crA crA* / 200 B -*mi* below E (and in 199) / 201 Ct ²D om, (202) -*simi* below BA / 202–203 M *Altissimi-* conj below E+EFGF / 204 B ∴ below ¹A / 205–206 T1 *non commovebi-* below ACBCD, (207) -*tur* below E / 206 B ∴ below ¹D / 208 B ∴ below A / 210 B ∴ below D / 217 Ct ∴ below ¹D / 221 B ∴ below ¹D / 224 T2 *qA* for *sqB sqA* (but not in 14) / 229 Ct ∴ below ¹D / 231 B ∴ below A / 236 B *mF* for *crF crF*, (237) -*hemen-* below ED, (238) -*ter* below B / 238 Ct ∴ below D; T2 A is *crA qA qA*, *exultabit* below ²A³AGG, (239) *vehemen-* conj below AEGA (cf. 28–30 including reading noted above) / 239 B ∴ below A / 240 B ∴ below A / 240–241 Ct *exultabit* conj below EDCG, (241–242) *vehementer* conj below DBEDC / 242–244 B ²A³ADCFEDA (and und *exultabit vehementer*) om / 242–248 M *sbA sbA sbA+sbA+sbA+sbA+sbA* for *sb+sb sb+m m sb+sb sb*, *vehementer* below these three notes (not in 240–242) / 243 Ct ∴ below ²A / 246 Ct ∴ om below D; T2 *exulta-* below FGA, (247) -*bit* below F, *crD* is *qD qD*, *vehemen-* below DDA /
- C** 1 B Clef F4 / 25 B new staff in source with clef F3 begins with D / 64–66 B und -*um praevenisti e-* om / 173 B *cr-rest* after G, ¹C deleted / 182–183 B *mF+crF* is *cr-rest crF+crF*, *vul-* below *crF+crF* / 244–245 B *vehemen-* conj below DEFDC /

The readings for sources **D**, **E** and **F** are combined below

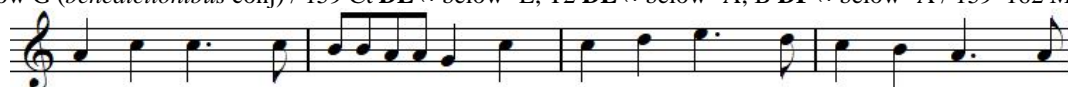
1 T1 **D** no mensuration symbol; B **DF** clef C5 throughout / 4 T1 **DE** *tua* conj below F²E / 7 Ct **DE** ∴ below ¹D / 8 T1 **DE** ∴ below ¹D / 9 M **DE** ∴ below ¹A / 11 B **DF** ∴ below ¹D / 12 T2 **DE** ∴ below ¹A / 13 T2 **DE** ²AB are *dot-cr q* (but not in 223) / 19 Ct **DE** ∴ below ¹D; T1 **DE** ∴ below A / 20 M **DE** ∴ below ¹E / 21 B **D** ∴ below ¹A; **F** ∴ om / 22 T2 **DE** ∴ below ¹E / 23 T1 **DE** ∴ below ¹E / 28 M **DE** ∴ below A / 28–29 T2 **DE** *vehementer* for *exultabit* / 29 T1 **DE** ∴ below D; T2 **DE** ∴ below G; B **D** A is *qA qA*, *vehemen-* below AAE, **F** ∴ below *crA* / 30 T2 **D** ∴ below G; B **DF** A is *qA qA*, **D** ∴ below ¹A, **F** ∴ om / 34 Ct **DE** *dot-mC* for CDC (but not in 37–38) / 35 T1 **D** *cordis* conj below EDED, *e-* amb, **E** *cordis* conj below EDED, *e-* amb /

36 Ct **DE** ∷ below ¹E; B **DF** ∷ below A / 37 M **DE** ∷ below A / 38 T1 **DE** ∷ below ¹E; T2 **DE** ∷ below ¹A / 39–40 M **DE** E+
cr-rest is *crE m*-rest / 41 B **F** *tribuisti* conj below E¹FG, *ei* conj below ²F / 42 M **DE** ∷ below B / 43 T2 **DE** ∷ below B; B **D** ∷
below ²E, **F** ∷ om / 44 Ct **DE** ∷ below ¹E / 46 Ct **E** *m*-rest om / 49 B **DF** ∷ below C / 50 M **DE** ∷ (for 9 notes) below C / 51
T1 **DE** ∷ below F / 52 B **D** C is *qC qC*, *labi-* below CC, (53) *-orum e-* below GAG / 53 B **F** *-jus* below ¹G / 55 T1 **D** sl for EC,
E *-um* below C / 57 T1 **DE** ∷ below G; B **DF** ∷ below C / 58 M **DE** ∷ below C / 59 T2 **DE** ∷ below C / 60 T1 **DE** ²E is *qE qE*,
-nisti e- below ²E³EB, (61) *crA* for ¹A²A with und *-um* / 61 T1 **DE** ∷ below ³A / 62 B **D** ∷ (for 9 notes) below ²A, **F** ∷ om / 64
B **F** no ∷ below D / 65 M **DE** ∷ below ¹A; Ct **DE** ∷ below ³E / 66 M **DE** *mA* for *crA crA* / 70 B **F** ∷ om below ²D / 74 Ct **DE**
crE for *qE qE*, (75) *crD* for *qD qD*, B is *dot-crB qB*, **D** *in ca-* below DC, sl for C¹B, *-pi-* below ²B, **E** *in* below D, *ca-* below
¹B, *-pi-* below ²B / 75 B **D** ∷ below D, **F** ∷ (for *posuisti* only) om / 76 T2 **DE** ∷ below A / 77 M **DE** ∷ below D / 84 T2 **D** ∷
below G, **E** ∷ om; B **DF** ∷ below C / 85 Ct **E** *-so* below D; T1 **DE** ∷ below C / 86 M **DE** ∷ below G / 87 Ct **DE** ∷ below C /
94 T1 **DE** ∷ below A / 95 T2 **DE** ∷ below D; B **DF** ∷ below A / 98 B **DF** *mA* for *crA crA*, **D** *a* below E, (99) **DF** *mF mE* for
FFEE, (98–99) lig for *mE mF*, **F** no und in 98–99 / 99 Ct **DE** ∷ below ²A / 100 T2 **DE** G is *cr*-rest *crG*, ∷ (for 11 notes) below
crG / 103 M **DE** ∷ below ²A; Ct **DE** ∷ below E / 104 T1 **DE** ∷ below ¹A; B **F** *e-* om, (105) *in* below E / 112 M **D** *sae-* below
⁴D (not in 113), *et in* added later before *sae-* / 112–115 B **DF** (except **F** has ∷ below A+A)



- lum sae-cu - li, sae - cu -

113 T1 **DE** ∷ below ²E / 114 M **D** sl for BG / 115 M **D** sl for BA; Ct **DE** *-cu-* below C, *mE* for *dot-crE qE*; T1 **DE** ¹C²C are *cr*
cr / 117 M Ct T1 T2 B **EF** ‘Secunda pars’ on staff (some abbreviated), mensuration symbol ♃ at start of bar / 121 Ct **DE** *mE*
for EDE / 123 Ct **D** *mE* for E¹DC / 124 T1 **DE** ∷ below ¹B / 125 Ct **DE** ∷ below ¹B / 126 M **E** ²E is C / 127 M **E** *-o* below E
(not in 126); B **DF** ∷ below ¹E / 128 T2 **DE** ∷ below ¹B / 129 M **DE** ∷ below ¹B / 130–131 Ct **DE** *in salutari tu-* below
EDCBAE / 131 Ct **DE** *mC* for CBC / 134 T2 **DE** CA for AF (reading of version 1 adopted) / 134–135 B **F** *decorem* om / 135
B **D** ∷ below ²A, **F** ∷ om / 136 M **D** sl for AD; T1 **DE** ∷ below ¹A; T2 **DE** ∷ below ¹E / 137 Ct **DE** ∷ below ¹A; T2 **DE** CA
for AF (reading of version 1 adopted) / 138 M **DE** ∷ below ¹E; B **D** ∷ (later addition) below ²C / 139 Ct **DE** D is E / 141 M
DE DD are *dot-cr q*; B **DF** ∷ below D / 143 M **D** ∷ below A; T1 **DE** ∷ below D / 144 M **DE** CC are *dot-cr q* / 145 M **DE** ∷
below A; Ct **DE** ∷ below D; T1 **DE** ∷ below D; B **DF** ∷ below D / 146 M **DE** CC are *dot-cr q*; T2 **DE** *mA mD* for AADD,
with und *-pones*, (147) *super e-* amb below EFGAB (but clear in 150) / 148 M **DE** ∷ below ²A; Ct **D** ∷ below D, **E** ∷
misplaced below C; T1 **DE** ∷ below D; B **D** ∷ below D, **F** ∷ om / 149 M **D** CC are *dot-cr q*; T2 **DE** *mA mD* for AADD, with
und *-pones*, (150) *super e-* below EFG / 150 T1 **D** sl for ED²B / 154 T1 **D** sl for CB, **E** *-bus* below B (*benedictionibus* conj); B
D sl for ²BG / 157 T2 **D** sl for FC, (158) *-ni-* below G, sl for GAE / 158 M **D** *-ni-* amb, **E** *-bus* below B; Ct **D** sl for ²BG; T2 **E**
-bus below G (*benedictionibus* conj) / 159 Ct **DE** ∷ below ¹E; T2 **DE** ∷ below ²A; B **DF** ∷ below ¹A / 159–162 M **DE**



- bus, in be - ne - di-cti-o-ni-bus, in be - ne - di - cti - o - ni -

162 T1 **D** sl for ²C²D; B **D** FF are *dot-cr q* / 165 Ct **DE** *crE* for *qE qE*, *saecu-* below EC, **D** sl for C²D, (166) **DE** *-li* below E;
(165) T1 **DE** ∷ below G / 166 M **DE** ∷ om below B; T1 **DE** *crB* for *qB qB*; B **D** ∷ below C, **F** ∷ om / 167–168 Ct **D** sl for
²DE / 173 T2 **DE** ∷ below ¹G; B **DF** ¹C is *cr*-rest, **F** ∷ om below ²C / 174 M **DE** *mF* for *dot-crF qF*, *-dio* one note later; T2
DE ³A is B, (175) B is G / 175 Ct **DE** ∷ below ¹G; T1 **DE** ∷ below C / 180 M **E** *-o* below E; B **DF** *-o* below D, **D** ∷ below G,
F ∷ om / 181 T2 **DE** ∷ below ¹C / 181–184 T1 **E** und *cum vultu tuo* amb below GGFA+AGFE / 182 M **DE** ∷ below F; Ct **DE**
∷ below ¹D; T2 **DE** D is *qD qE*; B **DF** DDF are *mD cr*-rest *crF* no tie, **D** ∷ below F, **F** ∷ om / 183 Ct **DE** no lig, *-o* below A,
(184) *mA* is *m*-rest / 183–184 T2 **DE** lig for *m m* / 184 M **DE** ∷ below F; Ct **DE** ∷ below ²A; T1 **DE** ∷ below D; T2 **DE** ∷
below F; B **D** ∷ below D, **F** ∷ om / 186 M **DE** ∷ below ²C / 188 T1 **DE** DD are *cr cr* / 189 T2 **E** ∷ below C (but om in 193) /
190 T1 **DE** ∷ below ¹C / 191 M **DE** DD are *cr cr*; Ct **DE** AA are *cr cr*; T2 **DE** ∷ below ¹G / 192 T1 **DE** DD are *cr cr*; B **DF** ∷
below ¹C / 193 M **DE** ∷ below ¹C / 194 Ct **D** ∷ below ¹F / 197 T2 **DE** ²B³B are *cr cr* / 198 T2 **DE** BB are *cr cr*; B **DF** *mE* for
crE crE, und *-a* (199) AAD are *mA crD crD*, und *Altissimi-*, (200) *-mi* below ¹E / 201 M **DE** *mC* for *dot-crC qC*, (201–202)
-simi amb below BAG; (201) Ct **DE** *mD* for *dot-crD qD*, (202) *-si-* below B, (203) *-mi* below A / 203 M **D** sl for ¹FG, *-simi*
conj below ²FEDC, **E** *-si-* below G / 204 M **DE** *Altissimi* conj below GFEDCG; B **DF** ∷ below ¹A / 204–205 T1 **E** *-tur* ∷ amb
below BAC / 206 T2 **DE** ∷ below A; B **DF** ∷ below ¹D / 207 M **DE** ∷ below ¹D; Ct **DE** ∷ below A, (208) ²F is *qF qF*, (209)
crD crD crD qF qF for DF, ∷ below ¹D / 207 T1 **DE** A is F / 208 T1 **DE** ∷ below ¹D; B **DF** ∷ below A / 209 T1 **DE** ∷ below
³D; T2 **DE** ∷ below A / 210 M **DE** ∷ below A; B **D** ∷ om below D, **F** ∷ below D / 211 T2 **DE** ∷ below A / 214 T1 **D** *-a*
separated from *tu-* and amb below ²D and next note / 217 Ct **DE** ∷ below ¹D / 218 T1 **DE** ∷ below ¹D / 219 M **DE** ∷ below ¹A /
221 B **DF** ∷ below ¹D / 222 T2 **DE** ∷ below ¹A / 229 Ct **DE** ∷ below ¹D; T1 **DE** ∷ below A / 230 M **DE** ∷ below ¹E / 231 B
D ∷ below A, **F** ∷ om / 232 T2 **DE** ∷ below ¹E / 233 T1 **DE** ∷ om below ¹E / 238 M **DE** ∷ below A (for 12 notes); Ct **DE** ∷
below ¹D; T2 **DE** ∷ below ¹G / 239 T1 **DE** ∷ below D; T2 **D** ∷ below G (om in E); B **D** A is *qA qA*, *vehemen-* below AAE /
239–240 B **F** *cr*-rest AEFE om / 240 T2 **DE** ∷ below G; B **DF** A is *qA qA*, ∷ below ¹A / 240–241 Ct **DE** *vehemen-* conj
below EDCG, (241) *crB qB qB* for *mB*, *-ter* ∷ below ¹B²B, (243) **D** sl for ABC / 242 T1 **DE** *vehementer* for *exultabit*; T2 **DE**
∷ below ¹D; B **DF** ∷ below ²A / 243 Ct **DE** ∷ below ²A; T1 **DE** ∷ below F; T2 **DE** F is D / 244 T1 **DE** ∷ below ¹F; T2 **DE** ∷
below ¹E; B **DF** ∷ below ²A / 245 T1 **DE** ∷ below D; T2 **D** ∷ below F; B **D** ∷ below ²D / 245–246 T2 **DE** *mD cr*-rest is
mD+crD / 246 Ct **DE** ∷ (for four notes) below D, no tie; T1 **DE** ∷ below A; T2 **D** ∷ below F, **E** *exulta-* below FGA, (247) *-bit*
below F, *crD* is *qD qD*, *vehemen-* below DDA; (246) B **DF** D is *crD mD*, **D** ∷ below *mD* / 247 Ct **DE** no tie, *qE* is *qD*, ∷
below ¹D; T1 **D** ∷ below ¹D, sl for F²D; T2 **D** *crD* is *qD qD*, ∷ below ¹D /