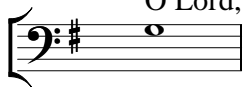


THE PEPENBURY PRECES & RESPONSES

SSATBB
RICHARD SHEPPARD

The Preces

O Lord, open thou our lips.



And our mouth shall shew forth thy praise.

O God, make speed to save us.



O Lord, make haste to help us.

Glo-ry be to the Fa-ther and to the Son and to the Ho-ly Ghost.



As it was in the be-gin-ing, is now and e-ver shall be,

World with-out end. A - men.

Praise ye the Lord.



The Lord's name be prai - sed.

Musical notation for the second part, featuring a vocal line and a piano accompaniment. The vocal line is in a soprano clef with a key signature of one sharp. The piano accompaniment consists of two staves, treble and bass clef, with a key signature of one sharp. The lyrics are 'The Lord's name be prai - sed.'

The Responses

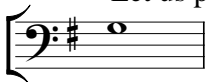
The Lord be with you.



And with thy spi - rit.

Musical notation for the second response, featuring a vocal line and a piano accompaniment. The vocal line is in a soprano clef with a key signature of one sharp. The piano accompaniment consists of two staves, treble and bass clef, with a key signature of one sharp. The lyrics are 'And with thy spi - rit.'

Let us pray.



Lord, have mer - cy up - on us, Christ have mer - cy up - on us,

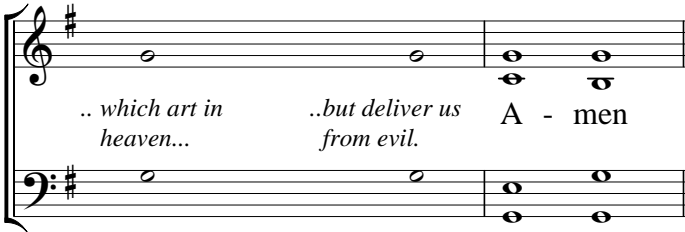
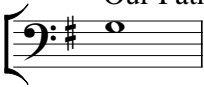
Musical notation for the first part of the prayer, featuring a vocal line and a piano accompaniment. The vocal line is in a soprano clef with a key signature of one sharp. The piano accompaniment consists of two staves, treble and bass clef, with a key signature of one sharp. The lyrics are 'Lord, have mer - cy up - on us, Christ have mer - cy up - on us,'

Lord, have mer - cy up - on us.

Musical notation for the second part of the prayer, featuring a vocal line and a piano accompaniment. The vocal line is in a soprano clef with a key signature of one sharp. The piano accompaniment consists of two staves, treble and bass clef, with a key signature of one sharp. The lyrics are 'Lord, have mer - cy up - on us.'

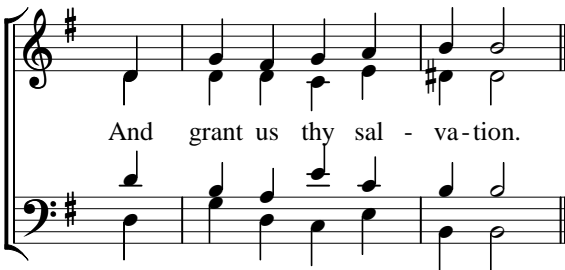
The Lord's Prayer

Our Father...



.. which art in heaven... ..but deliver us from evil. A - men

O Lord, shew thy mer-cy up-on us.



And grant us thy sal - va-tion.

O Lord, save the Queen.



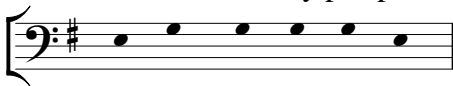
And mer-ci-ful-ly hear us when we call up - on thee.

En-due thy min-is-ters with right-eous-ness.



And make thy cho-sen peo-ple joy - ful.

O Lord, save thy peo-ple.



And bless thine in - her - it-ance.

A two-staff musical score in G major. The treble staff contains a vocal line with lyrics: "And bless thine in - her - it-ance." The bass staff provides accompaniment with chords and single notes.

Give peace in our time, O Lord.



Be - cause there is none o-ther that fight-eth for us: but on - ly thou, O God.

A two-staff musical score in G major. The treble staff contains a vocal line with lyrics: "Be - cause there is none o-ther that fight-eth for us: but on - ly thou, O God." The bass staff provides accompaniment with chords and single notes.

O God, make clean our hearts with-in us.



And take not thy Ho - ly Spi - rit from us.

A two-staff musical score in G major. The treble staff contains a vocal line with lyrics: "And take not thy Ho - ly Spi - rit from us." The bass staff provides accompaniment with chords and triplets. The word "Ho" is marked with a triplet in both staves.

The Collects

The Collects...



After the first Collect

A - men

A grand staff with treble and bass clefs, key signature of one sharp (F#). The treble clef part has a whole note chord of G4, B4, and D5. The bass clef part has a whole note chord of G2, B1, and D2. The lyrics "A - men" are written below the treble staff.

After the second Collect

A - men

A grand staff with treble and bass clefs, key signature of one sharp (F#). The treble clef part has a whole note chord of G4, B4, and D5. The bass clef part has a whole note chord of G2, B1, and D2. The lyrics "A - men" are written below the treble staff.

After the third Collect

A - - - - - men.

A grand staff with treble and bass clefs, key signature of one sharp (F#). The treble clef part has a melody: G4 (quarter), A4 (quarter), B4 (quarter), G4 (quarter), F#4 (quarter), E4 (quarter), D4 (quarter), C4 (quarter). The bass clef part has a bass line: G2 (quarter), B1 (quarter), D2 (quarter), G2 (quarter), B1 (quarter), D2 (quarter), G2 (quarter), B1 (quarter). The lyrics "A - - - - - men." are written below the treble staff.

** The upper part may be omitted if preferred.*