

Magnificat secondo

Selva morale e spirituale (1640/41)

Basso continuo

Claudio Monteverdi (1567 – 1643)

Magnificat

à 4

B. c.

6

11

15

20

25

32

38

44

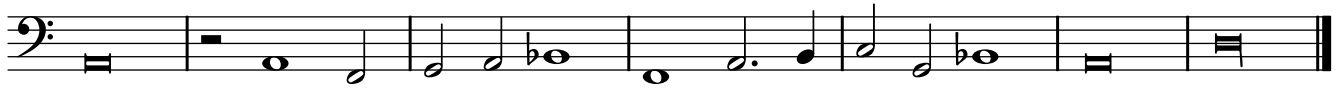
50

56

62

Quia respexit

68



Single musical staff for bass clef, starting with a key signature of one flat and a common time signature. The music consists of a single melodic line.

75

à 3 Et misericordia



Musical staff for bass clef, starting with a key signature of one flat and a common time signature. The music features a triple meter (à 3). The notation includes various rhythmic values and accidentals.

84



Single musical staff for bass clef, continuing the melodic line.

91



Single musical staff for bass clef, continuing the melodic line.

96



Single musical staff for bass clef, continuing the melodic line.

102



Single musical staff for bass clef, continuing the melodic line.

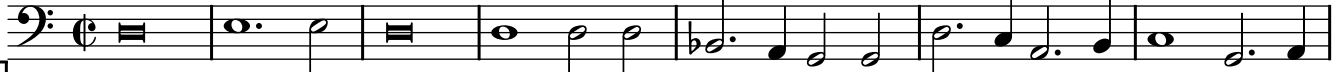
106



Single musical staff for bass clef, continuing the melodic line.

111

à 4 Deposuit potentes



Musical staff for bass clef, starting with a key signature of one flat and a common time signature. The music features a quadruple meter (à 4). The notation includes various rhythmic values and accidentals.

118



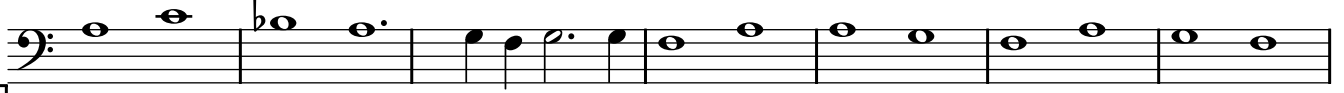
Single musical staff for bass clef, continuing the melodic line.

125



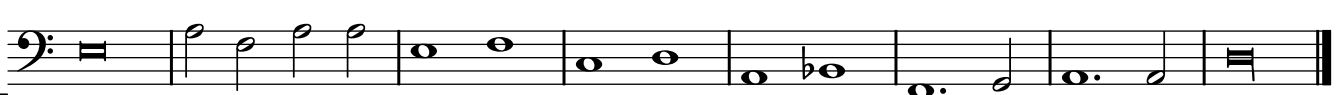
Single musical staff for bass clef, continuing the melodic line.

131



Single musical staff for bass clef, continuing the melodic line.

138



Single musical staff for bass clef, continuing the melodic line.

146

à 3 Suscepit Israel



Musical staff for bass clef, starting with a key signature of one flat and a common time signature. The music features a triple meter (à 3). The notation includes various rhythmic values and accidentals.

151



Single musical staff for bass clef, continuing the melodic line.

156



161



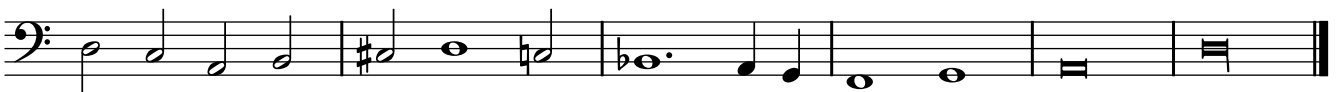
167



173



178



184

à 4

Gloria Patri

Gloria Patri



190



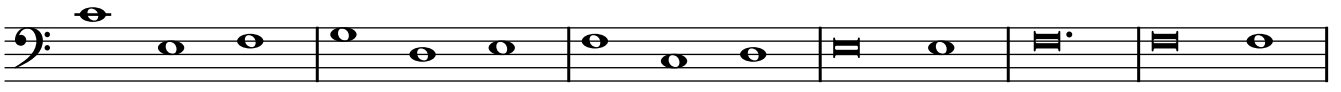
195



200



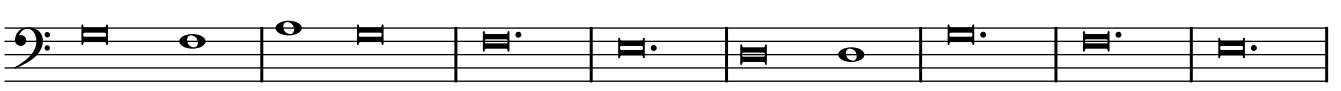
205



211



219



227

