

Magnificat secondo

Selva morale e spirituale (1640/41)

Basso continuo

Claudio Monteverdi (1567 – 1643)

Magnificat

B. c.

8

15

25

Quia respexit

à 4

34

42

51

59

67

75 *à 3* Et misericordia



Musical staff for measure 75, starting with a triplet of eighth notes. The key signature has one flat (B-flat). The staff contains a sequence of notes and rests, including a triplet of eighth notes at the beginning.

84




Musical staff for measure 84, continuing the sequence of notes and rests.

91




Musical staff for measure 91, continuing the sequence of notes and rests.

98



Musical staff for measure 98, continuing the sequence of notes and rests.

104



Musical staff for measure 104, ending with a double bar line. The staff contains a sequence of notes and rests, including a triplet of eighth notes at the beginning.

111 *à 4* Deposuit potentes



Musical staff for measure 111, starting with a group of four notes. The key signature has one flat (B-flat). The staff contains a sequence of notes and rests, including a group of four notes at the beginning.

120



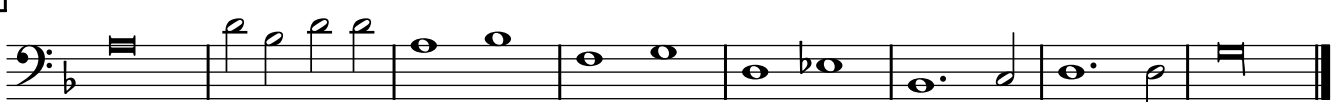
Musical staff for measure 120, continuing the sequence of notes and rests.

128



Musical staff for measure 128, continuing the sequence of notes and rests.

138



Musical staff for measure 138, ending with a double bar line. The staff contains a sequence of notes and rests.

146

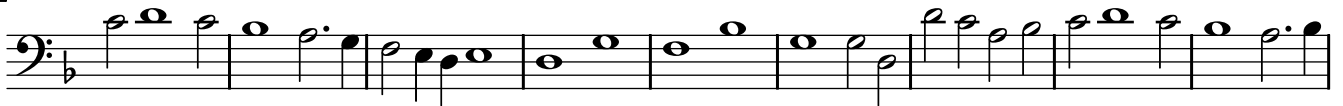
Suscepit Israel



155



164



173



184

Gloria Patri



192



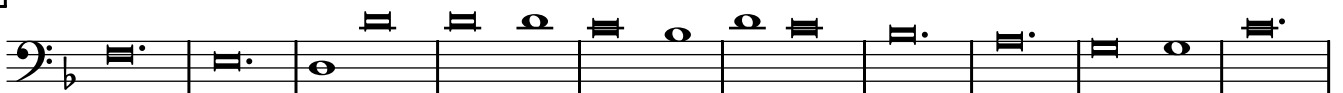
199



206



215



225

