

Claudio Monteverdi

Iste confessor [II]

from *Selva morale e spirituale*,
Venice, 1641
SV 279

Iste confessor [II]

Claudio Monteverdi
(1567-1643)

(from *Selva morale e spirituale*, Venice 1641, SV 279)

Verse 1
[Soprano 1]

Verse 2
[Soprano 2]

Verse 3

Violin I

Violin II

Basso continuo

6 Ritornello

VI. 1

VI. 2

B. c.

10

V.1
[S.1]

V.2
[S.2]

[S.1]

V.3
[S.2]

VI. 1

VI. 2

B. c.

I - ste con - fes - sor

Ad sa - crum cu - ius

Sit sa - lus il - li

Sit sa - lus il - li

15

V.1
[S.1] Do-mi-ni sa-cra-tus Fes-ta, fes-ta plebs cu-ius ce-le-brat per or-bem,
V.2
[S.2] tu-mu-lum fre-quen-ter, Mem-bra, mem-bra lan-guen-tem mo-do sa-ni-ta-ti,
[S.1] de-cus at-que vir-tus, Qui su-pra cœ-li re-si-dens ca-cu-men,
V.3
[S.2] de-cus at-que vir-tus, Qui su-pra cœ-li re-si-dens ca-cu-men,
B. c.

(# #)

19

V.1
[S.1] Ho-di-e le-tus me-ru-it se-cre-ta, Scan-de-re, scan-de-re, scan-de-re Cœ-li.
V.2
[S.2] Quo-li-bet mor-bo fu-e-rint gra-va-ta, Re-sti-tu-un-tur, re-sti-tu-un-tur.
[S.1] To-ti-us mun-di ma-chi-nam gu-ber-nat, Tri-nus, tri-nus, tri-nus et u-nus.
V.3
[S.2] To-ti-us mun-di ma-chi-nam gu-ber-nat, Tri-nus, tri-nus, tri-nus et u-nus.
B. c.

#

24

[S.1] A - - - - - men, A - - - - - men.
V.3
(b) A - - - - - men, A - - - - - men.
[S.2] A - - - - - men, A - - - - - men.
VI. 1
VI. 2
B. c.

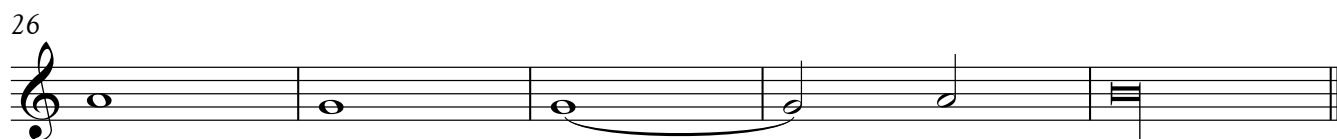
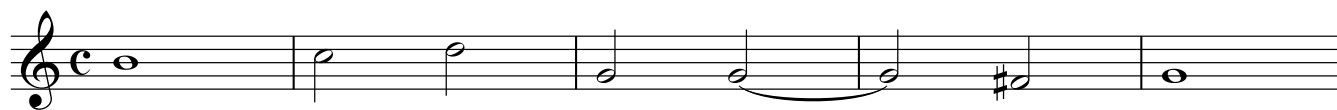
(#)

Violin I

Iste confessor [II]

Claudio Monteverdi
(1567-1643)

(from *Selva morale e spirituale*, Venice 1641, SV 279)

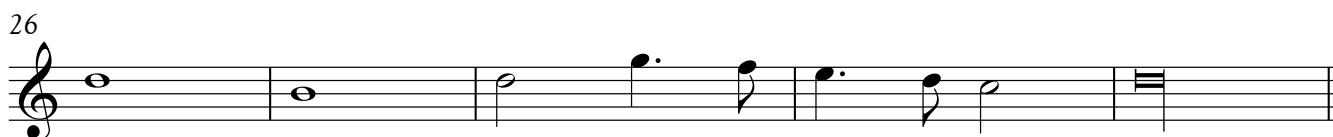
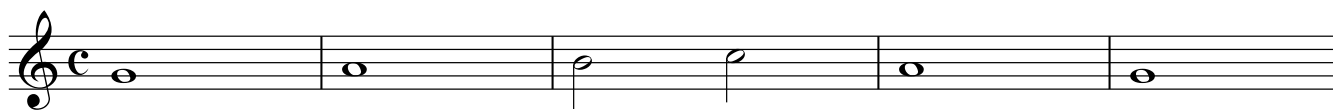


Violin II

Iste confessor [II]

Claudio Monteverdi
(1567-1643)

(from *Selva morale e spirituale*, Venice 1641, SV 279)



Soprano 1
[Verse 2 tacet]

Iste confessor [II]

(from *Selva morale e spirituale*, Venice 1641, SV 279)

Claudio Monteverdi
(1567-1643)

Ritornello

5 8

1. I - ste con - fes - sor Do - mi - ni sa - cra - tus

3. Sit sa - lus il - li de - cus at - que vir - tus,

The Ritornello consists of two systems of music. Each system has a treble clef and a common time signature (C). The first system shows measures 5 and 8. Measure 5 is a whole rest. Measure 8 is a whole note chord. The second system shows measures 7 and 8. Measure 7 is a quarter rest, followed by a quarter note G, a quarter note A, a quarter note B, and a quarter note C. Measure 8 is a whole note chord.

16

Fes - ta, fes - ta plebs cu - ius ce - le - brat per or - bem, Ho - di - e le - tus

Qui su - pra coe - li re - si - dens ca - cu - men, To - ti - us mun - di

Measures 16 and 17. Measure 16 is a whole note chord. Measure 17 is a whole note chord.

20

me - ru - it se - cre - ta, Scan - de - re, scan - de - re, scan - de - re Coe - li.

ma - chi - nam gu - ber - nat, Tri - nus, tri - nus, tri - nus et u - nus.

Measures 20 and 21. Measure 20 is a whole note chord. Measure 21 is a whole note chord.

24

A - - - - - men, A - - - - - men.

Measures 24 and 25. Measure 24 is a whole note chord. Measure 25 is a whole note chord.

Soprano 2
[Verse 1 tacet]

Iste confessor [II]

(from *Selva morale e spirituale*, Venice 1641, SV 279)

Claudio Monteverdi
(1567-1643)

Ritornello

5 8

5 8

2. Ad sa-crum cu - ius tu - mu - lum fre - quen - ter,

3. Sit sa - lus il - li de - cus at - que vir - tus,

16

Mem - bra, mem - bra lan - guen - tem mo - do sa - ni - ta - ti, Quo - li - bet mor - bo

Qui - supra coe - li re - si - dens ca - cu - men, To - ti - us mun - di

20

fu - e - rint gra - va - ta, Re - sti - tu - un - tur, re - sti - tu - un - tur.

ma - chi - nam gu - ber - nat, Tri - nus, tri - nus, tri - nus et u - nus.

24

(b)

A - - - - - men, A - - - - - men.